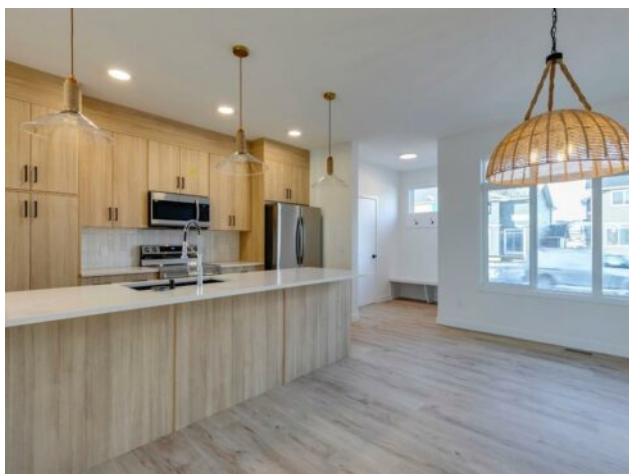


247 Sora Terrace SE
Calgary, Alberta

MLS # A2206010



\$540,000

Division:	Hotchkiss		
Type:	Residential/Duplex		
Style:	2 Storey, Attached-Side by Side		
Size:	1,504 sq.ft.	Age:	2025 (0 yrs old)
Beds:	3	Baths:	2 full / 1 half
Garage:	Alley Access, Parking Pad		
Lot Size:	0.06 Acre		
Lot Feat:	Back Yard, Corner Lot, Landscaped, Rectangular Lot		

Heating:	Forced Air	Water:	-
Floors:	Carpet, Ceramic Tile, Laminate	Sewer:	-
Roof:	Asphalt Shingle	Condo Fee:	-
Basement:	Separate/Exterior Entry, Full, Unfinished	LLD:	-
Exterior:	Wood Frame	Zoning:	r-g
Foundation:	Poured Concrete	Utilities:	-
Features:	High Ceilings, Kitchen Island, Open Floorplan, Quartz Counters, Separate Entrance		

Inclusions: n/a

*Visit show home at 318 sora way SE Calgary mon-thurs 4-7pm, sat/sunday 2-5pm. Self guided tours available outside those times! HALF DUPLEX "TALO" Floorplan, with 3 bed/2.5 bath + Bonus by 'Rohit Homes' - an award winning home builder for over 35 years. FEATURING: SEPARATE ENTRANCE | LARGE WINDOWS | CONCRETE PARKING PAD | BRAND NEW | All Perfectly located In SE Calgary's 'Sora in Hotchkiss', close to a park, featuring a pond, paths, easy access to major highways and more. Step inside to an expansive open floor plan that seamlessly connects living/dining and kitchen. KITCHEN FEATURES: SS appliances, quartz counters, large island (with place for bar stools), cabinets to ceiling (42' tall), boutique lighting - a perfect place to gather and create masterful meals. Off the kitchen is the dining, mid room and half bath. The TALO plan offers windows across the back and front, and with the high ceilings as well as open floor plan, it leaves the home feeling bright and inviting. Upstairs, find 3 good size bedrooms, bonus room, laundry, 2 full baths. The primary retreat includes a walk in closet, and spa like retreat full en-suite. Ensuite features: Single vanity, window, bath/shower combo with rain head and wand, quartz counters and beautiful tile work. The lot features alley access in the back to a concrete parking pad (double).. This home is packed with features that make it a great option to consider for your next home purchase. Located just outside the ring-road, east of Stoney Trail, offering quick access to highways and other amenities on the southeast side of Calgary. All pictures and 3D tours are of the 'TALO' floorplan that is completed, your unit may have different (colors/finishings/spec upgrades/design interior/elevation) depending on Lot - confirm with builder. Get moving on this brand new place - before it's gone! *Visit

show home at 318 sora way SE Calgary mon-thurs 4-7pm, sat/sunday 2-5pm. Self guided tours available outside those times!