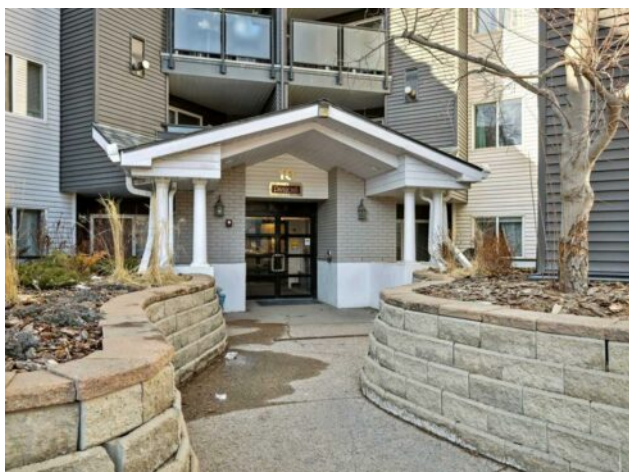


**210, 10 Sierra Morena Mews SW**  
**Calgary, Alberta**

**MLS # A2200720**



**\$364,900**

<b>Division:</b>	Signal Hill		
<b>Type:</b>	Residential/Low Rise (2-4 stories)		
<b>Style:</b>	Apartment-Single Level Unit		
<b>Size:</b>	794 sq.ft.	<b>Age:</b>	1995 (30 yrs old)
<b>Beds:</b>	2	<b>Baths:</b>	2
<b>Garage:</b>	Tandem, Titled, Underground		
<b>Lot Size:</b>	-		
<b>Lot Feat:</b>	-		

<b>Heating:</b>	Baseboard, Natural Gas	<b>Water:</b>	-
<b>Floors:</b>	Carpet, Ceramic Tile, Vinyl Plank	<b>Sewer:</b>	-
<b>Roof:</b>	Asphalt Shingle	<b>Condo Fee:</b>	\$ 576
<b>Basement:</b>	None	<b>LLD:</b>	-
<b>Exterior:</b>	Brick, Vinyl Siding, Wood Frame	<b>Zoning:</b>	M-C2
<b>Foundation:</b>	Poured Concrete	<b>Utilities:</b>	-
<b>Features:</b>	No Animal Home, No Smoking Home, Open Floorplan		

**Inclusions:** none

Fully Renovated & 2 Bedroom & 2 Bath & 2 Underground Parking Stalls This fully renovated 2-bedroom, 2-bathroom condo with a Tandem 2 car Titled Parking stall offers modern upgrades and an unbeatable location, just a block from Westhills Towne Centre! Featuring brand-new stainless steel appliances, luxury vinyl plank flooring, new carpet, fresh paint, and updated light fixtures throughout, this home is truly move-in ready. A designer-inspired feature wall in the primary bedroom and entryway adds a stylish touch, while the refaced fireplace enhances the open-concept living space. The well-thought-out floor plan places bedrooms on opposite sides of the unit, separated by the living room, making it a great setup for roommates or those wanting additional privacy. The kitchen, dining area, and living room flow effortlessly onto a private balcony. With shopping, dining, and amenities just steps away, this condo is the perfect blend of style, convenience, and comfort.