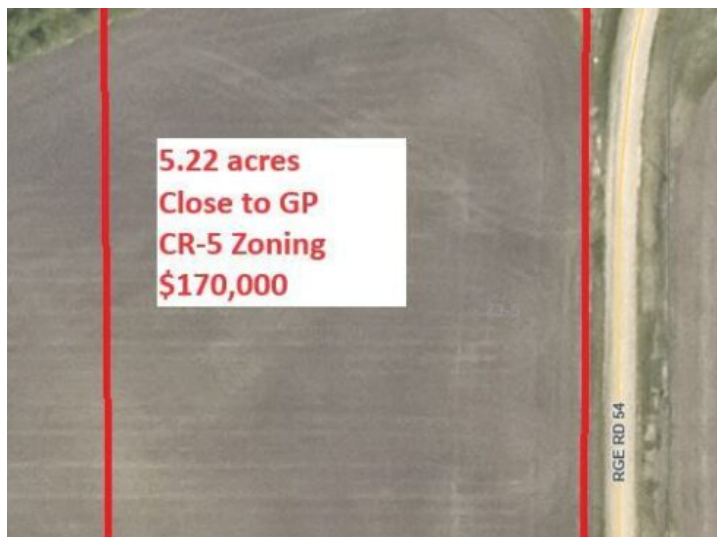


NE-8-73-5-W6 Range Road 54
Rural Grande Prairie No. 1, County of, Alberta

MLS # A2199426



\$219,900

Division: NONE

Lot Size: 5.22 Acres

Lot Feat: -

By Town: Clairmont

LLD: 8-73-5-W6

Zoning: CR-5

Water: None

Sewer: -

Utilities: -

POWER and GAS are in! Property is zoned for a modular home! Beautiful 5.2 acre parcel with close proximity to Grande Prairie. It comes with nice tree coverage to the North. Mostly pavement to the property with a short stint of gravel. Great potential for a home build or a modular home set up. Seller may be willing to do a short term vendor finance while you set up your acreage.