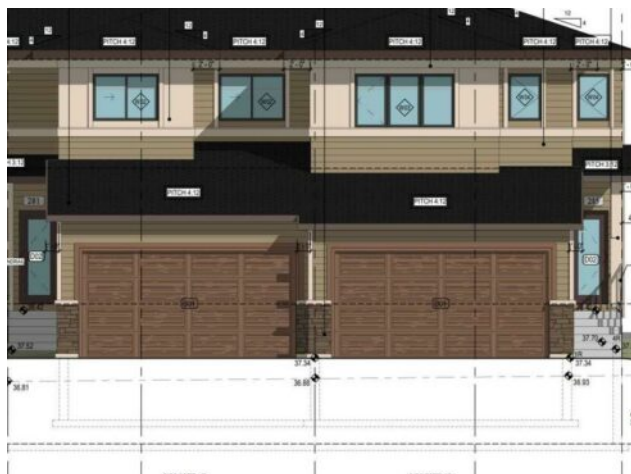


## 281 Waterford Heath Chestermere, Alberta

**MLS # A2196076**



# \$525,000

<b>Division:</b>	NONE		
<b>Type:</b>	Residential/Five Plus		
<b>Style:</b>	2 Storey		
<b>Size:</b>	1,316 sq.ft.	<b>Age:</b>	2025 (0 yrs old)
<b>Beds:</b>	3	<b>Baths:</b>	2 full / 1 half
<b>Garage:</b>	Double Garage Attached		
<b>Lot Size:</b>	0.06 Acre		
<b>Lot Feat:</b>	Rectangular Lot		

<b>Heating:</b>	Forced Air	<b>Water:</b>	-
<b>Floors:</b>	Carpet, Tile	<b>Sewer:</b>	-
<b>Roof:</b>	Asphalt Shingle	<b>Condo Fee:</b>	-
<b>Basement:</b>	Full, Unfinished	<b>LLD:</b>	-
<b>Exterior:</b>	Wood Frame	<b>Zoning:</b>	R-3
<b>Foundation:</b>	Poured Concrete	<b>Utilities:</b>	-
<b>Features:</b>	Kitchen Island, No Animal Home, No Smoking Home, Open Floorplan, Walk-In Closet(s)		

**Inclusions:** N/A

Welcome to this Brand new home built by award winning builder, Prominent Homes, in the Brand New Community of Waterford! This Beautiful townhouse as NO CONDO FEES and features 3 Bedrooms and 2 and half Bathrooms and Double Attached Garage. THE MAIN floor also features a Gorgeous Kitchen that has an Island, Dining Nook, and Living Room. THE UPPER floor has 3 Bedrooms including a Large Primary Bedroom with a walk in closet and 4 piece Ensuite and Laundry. It also has Alberta New Home Warranty. Possession is June 2025. Call to book your private showing today!