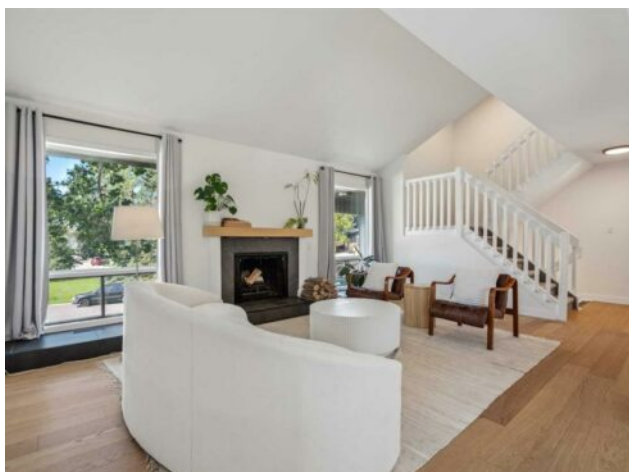


4 Coach Ridge Close SW Calgary, Alberta

MLS # A2245880



\$889,900

Division:	Coach Hill		
Type:	Residential/House		
Style:	2 Storey		
Size:	1,780 sq.ft.	Age:	1979 (46 yrs old)
Beds:	4	Baths:	3 full / 1 half
Garage:	Double Garage Attached		
Lot Size:	0.13 Acre		
Lot Feat:	Corner Lot, Rectangular Lot		

Heating:	Forced Air	Water:	-
Floors:	Carpet, Ceramic Tile, Hardwood	Sewer:	-
Roof:	Asphalt	Condo Fee:	-
Basement:	Finished, Full	LLD:	-
Exterior:	Brick, Cedar, Wood Frame	Zoning:	R-CG
Foundation:	Poured Concrete	Utilities:	-
Features:	Chandelier, Closet Organizers, Granite Counters, Kitchen Island, No Smoking Home, Open Floorplan, Walk-In Closet(s)		

Inclusions: TV Wall Mount in Family Room (TV Excluded)

Discover 4 Coach Ridge Close SW; A beautifully renovated home on a large corner lot, perfectly situated across from a park on a court quiet. Here are 5 things we LOVE about this home (and we're sure you will too): 1. A MATURE, FAMILY-FRIENDLY COMMUNITY: Coach Hill is one of Calgary's most beloved Westside neighbourhoods. Residents enjoy wide, tree-lined streets, numerous parks and playgrounds and a variety of housing styles to suit every lifestyle and budget. Commuting Downtown or heading to the mountains is a breeze with quick access to the Stoney Trail Ring Road, Bow Trail, Sarcee Trail, and Old Banff Coach Road as well as the 69th Street SW LRT station. You're nearly surrounded by amenities, from the restaurants, shopping, and professional services along 85th Street to Strathcona Square and Cougar Ridge Plaza. 2. ROOM TO LIVE + GROW: With over 2,200 sq. ft. of living space, 4 bedrooms, 3.5 bathrooms, 2 living areas, and an incredible backyard, this is truly a full-size home! From the moment you step inside, you'll notice the perfectly proportioned rooms that easily accommodate your furnishings and are filled with natural light all day long. At the heart of the home is the beautifully updated kitchen, featuring a stainless steel appliance package, granite counters, undermount lighting, and plenty of work and storage space. It opens seamlessly to the family room, making it perfect for both everyday living and entertaining. In the warmer months, the two-tier deck and backyard become a natural extension of your living space. Upstairs, the primary suite offers an updated 3-piece ensuite, a walk-in closet, and a secondary closet, while two additional bedrooms share an updated 4-piece bathroom. The basement provides a private guest suite or a perfect teenage retreat with its own 4-piece ensuite, storage and

access to the oversized attached double garage. 3. **THAT MAIN FLOOR:** From the formal front living room to the welcoming family room that opens onto the two-tier deck, this home is made for both entertaining and everyday living. The oversized dining room and beautifully renovated kitchen complete the picture making the main floor a showstopper. 4. **OUTDOOR LIVING:** As lot sizes shrink across the city, this oversized corner lot is a breath of fresh air! The expansive two-tier deck offers a massive entertaining area and flows into a well-proportioned backyard with plenty of room to kick a ball, let the dog run or even add a playhouse or RV parking pad. 5. **CHARM TO SPARE:** Forget cookie-cutter homes! This home it's packed with style and character. The lofty living room feels reminiscent of a ski chalet, with vaulted ceilings and a gorgeous wood-burning fireplace with a slate hearth. Elegant solid wood sliding French doors open onto your outdoor living space, while crisp white paint and wide-plank white oak flooring on the main floor create a bright, airy atmosphere. While the backyard is waiting for your move-in BBQ.