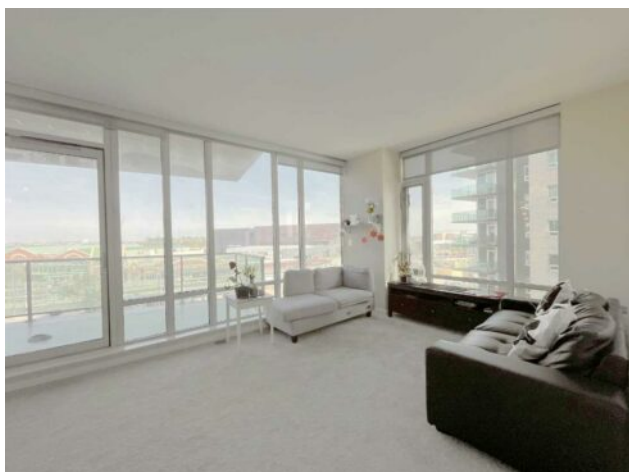


**606, 1410 1 Street SE**  
**Calgary, Alberta**

**MLS # A2221755**



**\$369,900**

<b>Division:</b>	Beltline		
<b>Type:</b>	Residential/High Rise (5+ stories)		
<b>Style:</b>	Apartment-Single Level Unit		
<b>Size:</b>	951 sq.ft.	<b>Age:</b>	2005 (20 yrs old)
<b>Beds:</b>	2	<b>Baths:</b>	2
<b>Garage:</b>	Stall, Underground		
<b>Lot Size:</b>	-		
<b>Lot Feat:</b>	-		

<b>Heating:</b>	Forced Air	<b>Water:</b>	-
<b>Floors:</b>	Carpet, Ceramic Tile	<b>Sewer:</b>	-
<b>Roof:</b>	-	<b>Condo Fee:</b>	\$ 714
<b>Basement:</b>	-	<b>LLD:</b>	-
<b>Exterior:</b>	Brick, Concrete	<b>Zoning:</b>	DC
<b>Foundation:</b>	-	<b>Utilities:</b>	-
<b>Features:</b>	Breakfast Bar, Kitchen Island, Open Floorplan, Walk-In Closet(s)		

**Inclusions:** N/A

Welcome to Sasso, one of downtown's most sought-after high-rises! This east-facing 2-bedroom, 2-bath condo offers stunning Skyline views, creating the perfect urban retreat. Thanks to floor-to-ceiling windows, step inside a space soaked in natural light. The modern kitchen is a chef's dream, featuring granite countertops, designer tiles, and sleek cabinetry. The spacious bedroom is adjacent to a luxurious 4-piece bathroom, offering style and comfort. Enjoy fresh air and breathtaking scenery from your east-facing balcony, the perfect spot for mesmerizing views. Sasso offers premium amenities, including daily concierge service, underground heated parking, a fitness center, a party room, a Cardio room, a Theatre, and a Hot tub for relaxing. The unbeatable location places you steps from Bow River Pathway, Stampede grounds, Eau Claire, LRT stations, shopping, restaurants, coffee shops, and downtown offices. The glamorous hotel-style lobby welcomes you home every day. Don't miss this fantastic opportunity—whether you're looking for a stylish downtown home or an investment property, this unit is a perfect choice. Call now to book your private viewing!