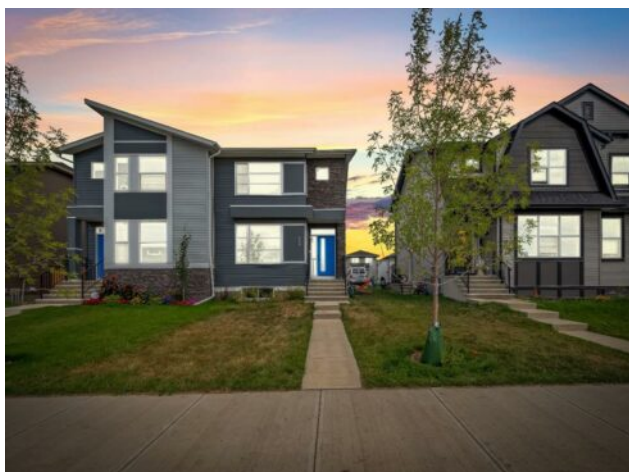


**360 Dawson Drive
Chestermere, Alberta**

MLS # A2213996



\$544,900

Division:	Dawson's Landing		
Type:	Residential/Duplex		
Style:	2 Storey, Attached-Side by Side		
Size:	1,602 sq.ft.	Age:	2023 (2 yrs old)
Beds:	3	Baths:	2 full / 1 half
Garage:	Parking Pad		
Lot Size:	0.07 Acre		
Lot Feat:	Back Lane		

Heating:	Forced Air
Floors:	Carpet, Tile, Vinyl Plank
Roof:	Asphalt Shingle
Basement:	Separate/Exterior Entry, See Remarks, Unfinished
Exterior:	Vinyl Siding, Wood Frame
Foundation:	Poured Concrete
Features:	Kitchen Island, Quartz Counters, Walk-In Closet(s)

Water:	-
Sewer:	-
Condo Fee:	-
LLD:	-
Zoning:	R3
Utilities:	-

Inclusions: N/A

Welcome to this beautifully built semi-detached home located in the vibrant community of Dawson's Landing in Chestermere, close to lake, parks and shopping plaza's. Positioned across from a serene pond, this home offers breathtaking views right from your doorstep. This house is equipped with lots of upgrades. At the entrance, you're welcomed with an open layout, a spacious living area with huge window, dining area, large gourmet kitchen is a chef's dream with up to the ceiling cabinets and quartz countertop, stainless steel appliances including a chimney hood fan and a built-in microwave. Venturing upstairs, this house has 3 bedrooms, 2.5 bathrooms, second floor laundry and a loft. Enjoy the added benefit of a separate entrance to the unfinished basement ideal for customization, rental opportunities, or multigenerational living. A concrete parking pad and paved back alley at the rear provides off-street parking and potential for a future garage. Book your private showing today.